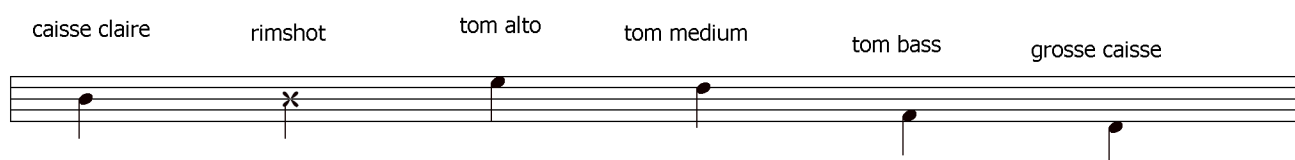


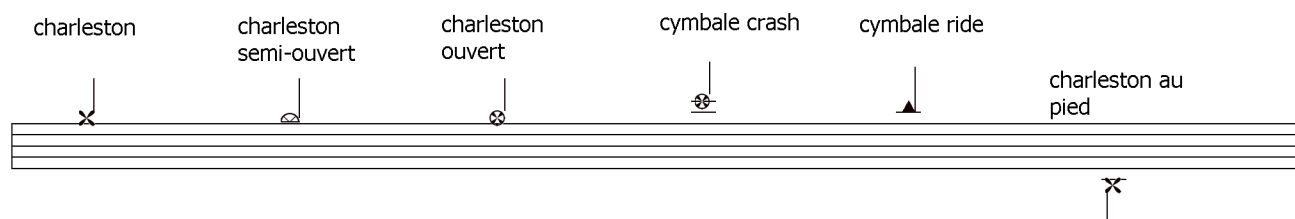
nomenclature

(ou placement des différents instruments de la batterie sur la portée).

Les Peaux



Les Métaux



- Abreviations :

- Tom alto = T1
- Tom medium = T2
- Tom bass = T3
- caisse claire = C.C.
- grosse caisse = G.C.
- rimshot = R.S. (caisse claire frappée sur le bord).
- charleston = h.h.
- cymbale ride = C.R.

taking over me

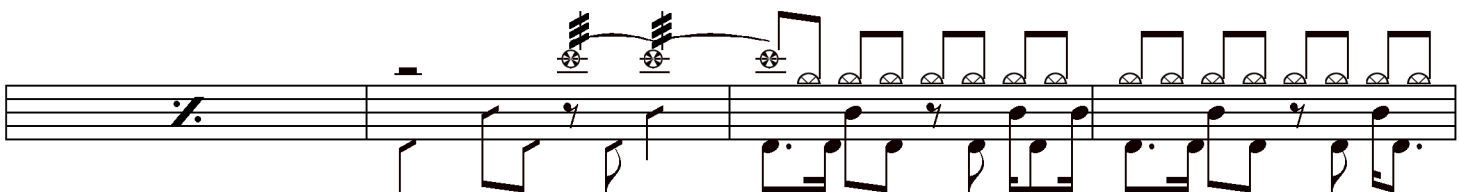
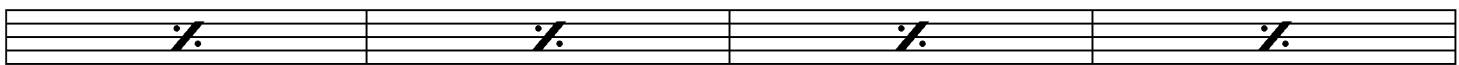
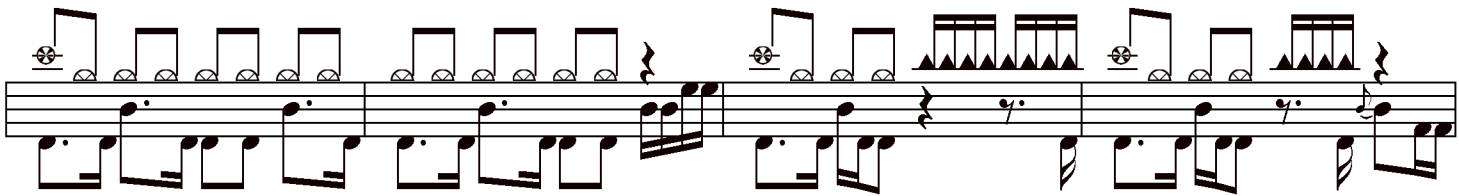
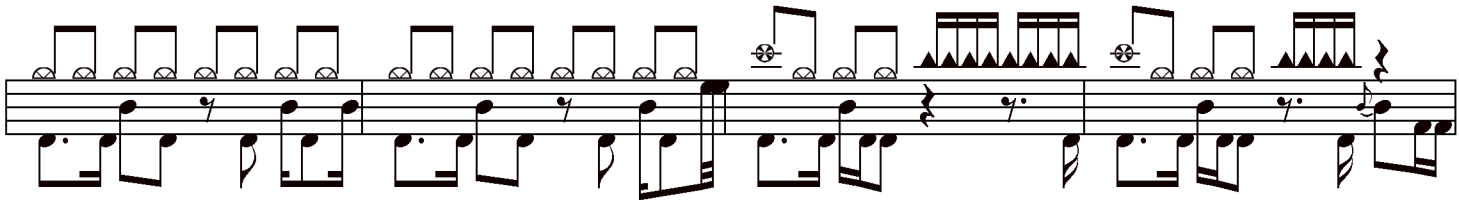
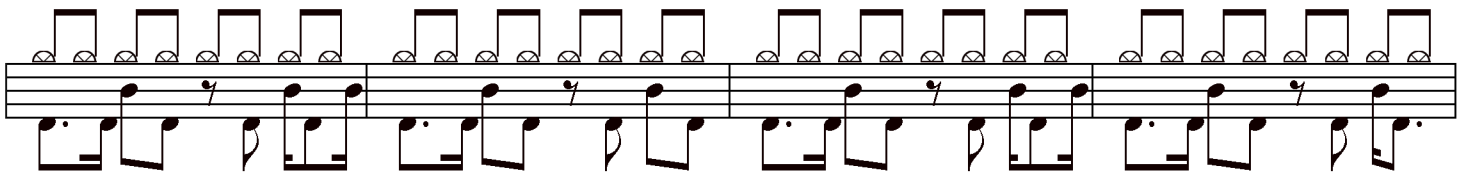
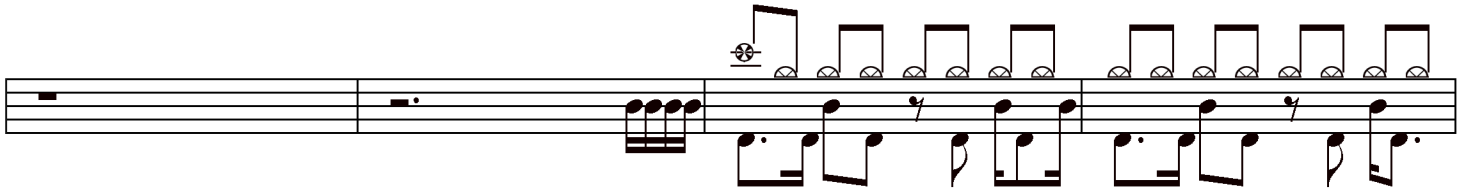
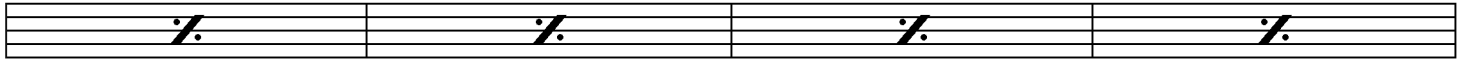
♩ = 90

compositeur: evanescence

3

drums machine

2/4



The image displays a musical score for guitar, consisting of four systems of staves. Each system contains two staves: a treble clef staff (top) and a bass clef staff (bottom). The music is written in a key signature of one sharp (F#) and a common time signature (C). The notation includes various rhythmic values such as eighth and sixteenth notes, rests, and dynamic markings like accents and slurs. The first three systems are complete, while the fourth system ends with a double bar line. The overall structure suggests a piece with a consistent rhythmic pattern and melodic development across the systems.