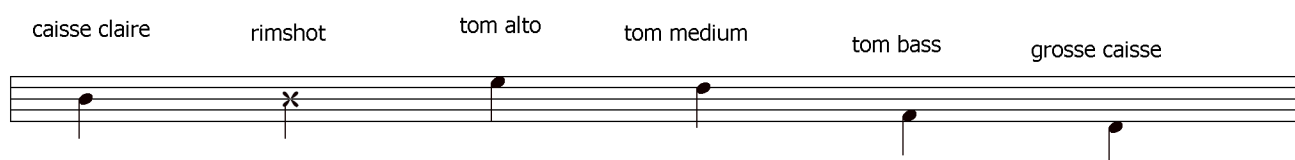


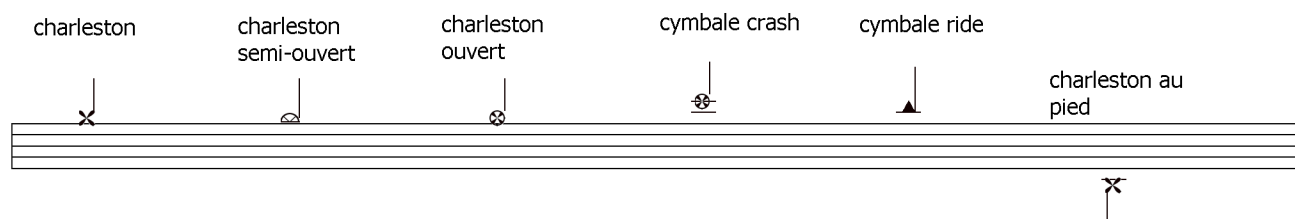
nomenclature

(ou placement des différents instruments de la batterie sur la portée).

Les Peaux



Les Métaux



- Abreviations :

- Tom alto = T1
- Tom medium = T2
- Tom bass = T3
- caisse claire = C.C.
- grosse caisse = G.C.
- rimshot = R.S. (caisse claire frappée sur le bord).
- charleston = h.h.
- cymbale ride = C.R.

A musical staff with rhythmic notation. It features a series of stems with flags, followed by a rest, and then a sequence of eighth notes with stems. The notation is primarily in the upper register of the staff.

A musical staff with rhythmic notation. It begins with a double bar line and a repeat sign. The notation includes stems with flags and eighth notes. A second ending bracket labeled '2' spans the final two measures of the staff.

Two empty musical staves. Each staff has a second ending bracket labeled '2' positioned in the middle of the staff.

A musical staff with rhythmic notation. It features stems with flags and eighth notes. A first ending bracket labeled '1.' spans the final two measures of the staff.

A musical staff with rhythmic notation. It features stems with flags and eighth notes. A second ending bracket labeled '2.' spans the final two measures of the staff.

A musical staff with rhythmic notation. It features stems with flags and eighth notes. A second ending bracket labeled '2.' spans the final two measures of the staff.

A musical staff with rhythmic notation. It features stems with flags and eighth notes. The staff concludes with a fermata over a note in the lower register.